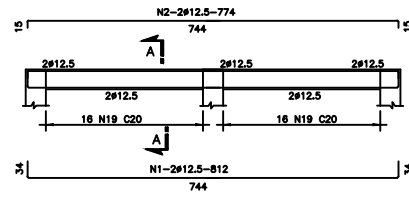
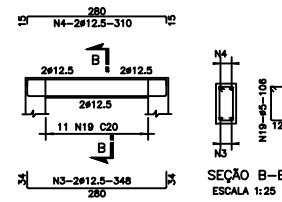


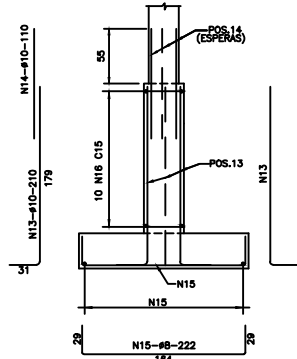
SAPATAS S1, S3, S4 E S6 (4X)
ESCALA 1:25



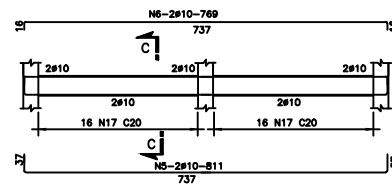
C1=C2=C0/40 (2X)
ESCALA 1:50



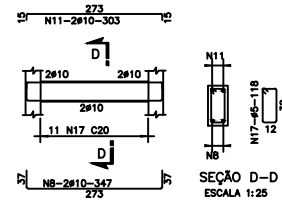
C3=C4=C5=20/40 (3X)
ESCALA 1:50



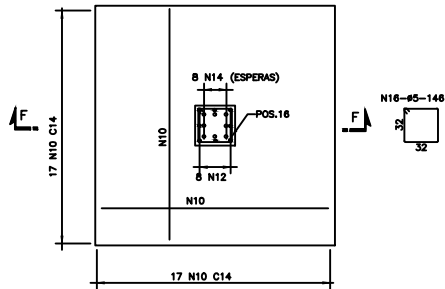
SEÇÃO E-E
ESCALA 1:25



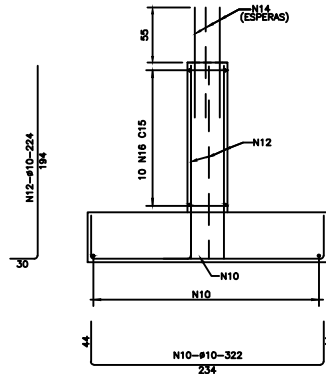
V1=V2=20/40 (6X)
ESCALA 1:50



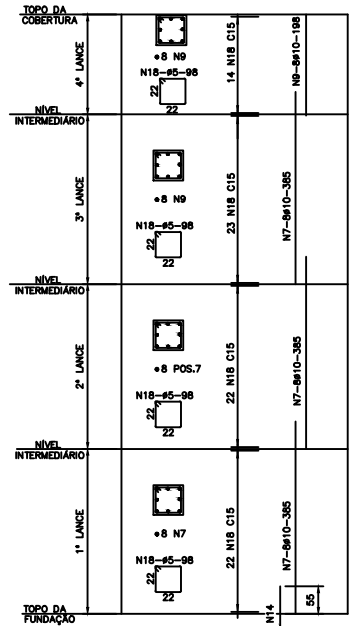
V3=V4=V5=20/40 (8X)
ESCALA 1:50



SAPATAS S2 E S5 (2X)
ESCALA 1:25



SEÇÃO F-F
ESCALA 1:25



PILARES P1 A P6-30X30 (6X)
ESCALA 1:25/1:50

No.	Ø (mm)	QUANT.	C.LIMIT. (cm)	C.TOTAL (m)
1	12,5	4	812	32,48
2	12,5	4	774	30,96
3	12,5	6	348	20,88
4	12,5	6	310	18,60
5	10	8	811	64,88
6	10	8	789	63,12
7	10	96	385	369,60
8	10	12	347	41,64
9	10	48	338	162,24
10	10	66	322	213,96
11	10	12	303	36,36
12	10	16	224	35,84
13	10	32	210	67,20
14	10	48	110	52,80
15	8	136	222	301,92
16	5	60	146	87,60
17	5	194	118	228,92
18	5	402	114	458,28
19	5	97	106	102,82

RESUMO			
AÇO	Ø	C.TOTAL (m)	MASSA (kg)
12,5		103	100
CA-50A	10	1363	853
	8	302	120
CA-60B	5	830	128
MASSA TOTAL-CA-50A			1073
MASSA TOTAL-CA-60B			128

- NOTAS:
- 1- DIMENSÕES DADAS EM CENTÍMETRO E DIÂMETROS EM MILÍMETRO.
 - 2- AÇO CA-50A E CA-60B.
 - 3- COBRIMENTO=4cm F/ SAPATAS, CINTAS, PILARES E VIGAS

PREFEITURA MUNICIPAL DE MARACANÃ

PROJETO BÁSICO DE SISTEMA DE ABASTECIMENTO DE ÁGUA

LOCAL: BAIRRO LIBERDADE

FUNÇÃO: PROJETO ESTRUTURAL - ARMAÇÃO

INDICADA: 03/03/2019

ELABORADO POR: CESAR EDUARDO MEDEIROS CANELAS FILHO

PROJETO Nº: 1502763729

03/03